

Basson

Antoine-Joseph Reicha (1770-1836)

Quintuor, Op. 91, No. 4 in G Minor

Chez Nikolaus Simrock: Bonn: Plate 1637 (1818-1819)

Permission granted to the IDRS to utilize the copy of the parts in the
Bibliotheek Koninklijk Conservatorium - Conservatoire Royal, Brussels

Edition by Charles-David Lehrer

Andante.

Basson

1 *f* 2 *f* 3 *p*

10 *Cresc.*

Allegro assai.

17 *f* 9 2 3 3 3 3 *f*

32 *p* 3 3 3 3 *f*

38 *p*

44

50 *Cresc.* 3 3 3 *f* *p*

56 *ff* *ff* *p*

63

69

75



82



88



93



99



106



113



120



128



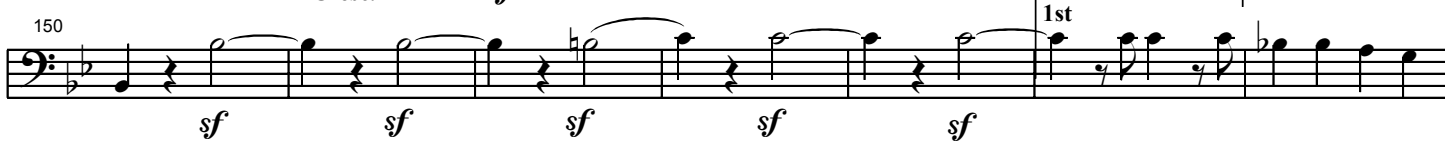
136



143



150



157



164

f *f* *f* *f* *f* *f*

171

f *f* *f* *f* *f* *f* *ff*

178

p

184

189

ff *p*

195

201

207

213 Solo

218

227

233

238

244 *fp*

250 *f* *p* *f* *f*

256 *p*

262

268 *f* *pp*

274 *Cresc.*

280 *p*

291 *ff* *ff* *p*

298

303

308

313

320

327

336

343

Cresc.

f p

351

359

Cresc.

366

p Cresc.

Cresc.

f

p

373

Cresc.

f

379

sf

sf

sf

sf

sf

386

p

393

Solo

399

pp

405

411

f

3

3

3

3

3

3

417

Measures 417-423: This system contains seven measures. Measures 417-419 feature eighth-note triplets, with measure 419 including a sharp sign on the second note. Measures 420-421 consist of continuous eighth-note triplets. Measure 422 begins with a piano (*p*) dynamic and a quarter rest, followed by a whole rest. Measure 423 starts with a fortissimo (*ff*) dynamic and a half note, followed by two quarter notes. A fermata is placed over the first half note of measure 423.

424

Measures 424-425: This system contains two measures. Measure 424 starts with a triplet of eighth notes, followed by a quarter note, then a triplet of eighth notes, and ends with a quarter note. Measure 425 begins with a triplet of eighth notes, followed by a quarter rest, a quarter note, another quarter rest, a quarter note, and finally a whole note. The system concludes with a double bar line.