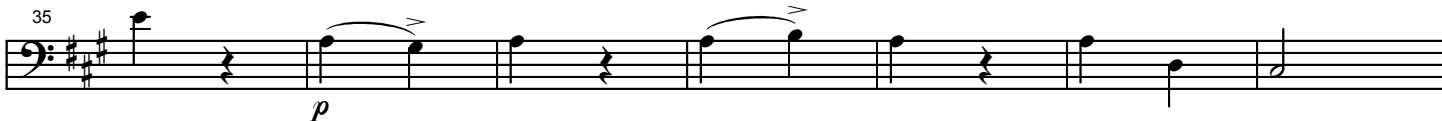
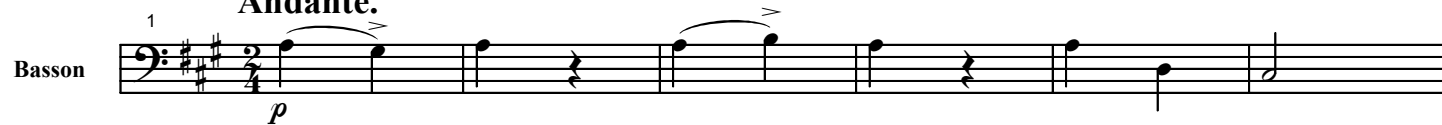


Basson

Finale. Andante.



102

fp

110

fp fp fp f

117

sf p

125

sf

133

sf

147

sf

154

sf

161

sf

168

pp

175

sf

183

f p f f

191

p f p f

197

sf

203

209

216

223

230

237

244

252

261

268

275

281

291

p

Andante.

Allegro poco vivace.

fp

f

f

p

Detailed description of the musical score: The score is written for a bass clef instrument. It begins at measure 203 with a series of eighth and sixteenth notes, some beamed together. Measure 209 shows a change in rhythm with more spaced-out notes and rests. Measure 216 starts with a piano (*p*) dynamic and a half note. Measure 223 continues with a half note and a whole note. Measure 230 marks the beginning of the 'Andante' section, indicated by a double bar line and the tempo change. It features a 2/4 time signature and notes with accents. Measure 237 continues the 'Andante' section. Measure 244 marks the beginning of the 'Allegro poco vivace' section, indicated by a double bar line and the tempo change. It features a 3/4 time signature and includes a triplet. Measure 252 continues the 'Allegro poco vivace' section with a triplet. Measure 261 continues with eighth notes. Measure 268 features a fortissimo piano (*fp*) dynamic. Measure 275 features a fortissimo (*f*) dynamic. Measure 281 features a fortissimo (*f*) dynamic and a triplet. Measure 291 continues with eighth notes and accents.

297

311

Solo

318

325

334

341

347

352

358

365

371

379

387

Fine

pp

f

fp

f

p

f

sf

p

f