

No. 46 in F# Major

Moderato.

Oboe

1

4

8

12

16

20

24

27

31

f

p

p

p

p

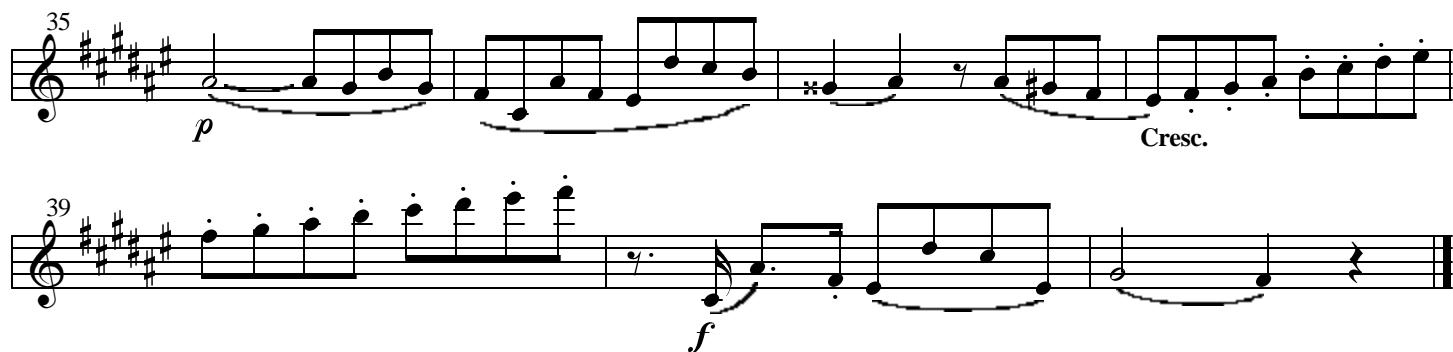
f

f

Cresc.

[Trio]

Cresc.



No. 46: Ferling presents us with another march, but in a difficult key and with subdivision of the quarter note by both 3 and 4. The structure consists of two binary forms: the second is a trio in the dominant which eventually moves to the tonic. A generous closing theme validates the tonic.