

Basson

Antoine-Joseph Reicha (1770-1836)

Quintuor, Op. 88, No. 4 in D Minor

Chez Nikolaus Simrock: Bonn: Plate 1538 (1818)

Permission granted to the IDRS to utilize the copy of the parts in the
Library Koninklijk Conservatorium - Conservatoire Royal, Brussels

Edition by Charles-David Lehrer

1 Larghetto.

Basson

8

15

22

Allegro assai.

32

39

45

51

58

66

f *p* *sf* *pp* *fp* *f* *p* *mf*

Solo

73

Cresc. *f* *p* Cresc.

80

f *p*

86

Cresc. *f*

93

3 *p*

102

109

116

f *f*

124 Solo *p* Cresc.

131

fp *f*

138

mf *f*

144

150

3 3 *p*

156

f

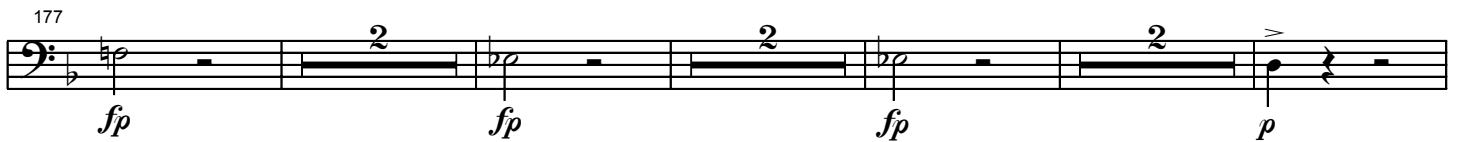
163



170



177



187



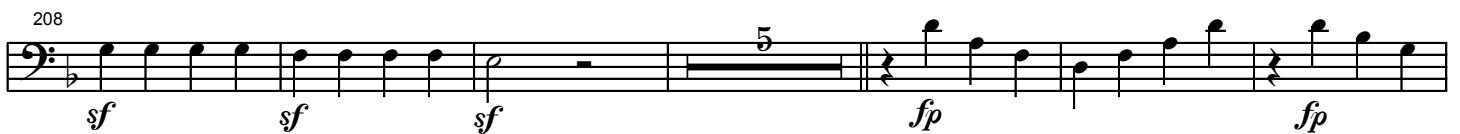
195



201



208



219



226



232



238



245



251



257 *sf*

Staff 257-263: Bass clef, key of B-flat major. Measures 257-263. Measure 257 has a triplet of eighth notes (Bb, C, D) beamed together, followed by a half note E. Measures 258-263 contain various eighth and quarter notes, with a crescendo hairpin starting at measure 258.

264 *fp*

Staff 264-269: Bass clef, key of B-flat major. Measures 264-269. Measure 264 has a triplet of eighth notes (Bb, C, D) beamed together, followed by a half note E. Measures 265-269 contain various eighth and quarter notes, with a crescendo hairpin starting at measure 265.

270 *fp* *p*

Staff 270-276: Bass clef, key of B-flat major. Measures 270-276. Measure 270 has a triplet of eighth notes (Bb, C, D) beamed together, followed by a half note E. Measures 271-276 contain various eighth and quarter notes, with a crescendo hairpin starting at measure 271.

277 *Cresc.* *f*

Staff 277-283: Bass clef, key of B-flat major. Measures 277-283. Measure 277 has a triplet of eighth notes (Bb, C, D) beamed together, followed by a half note E. Measures 278-283 contain various eighth and quarter notes, with a crescendo hairpin starting at measure 278.

284 *p*

Staff 284-294: Bass clef, key of B-flat major. Measures 284-294. Measure 284 has a triplet of eighth notes (Bb, C, D) beamed together, followed by a half note E. Measures 285-294 contain various eighth and quarter notes, with a crescendo hairpin starting at measure 285.

295

Staff 295-301: Bass clef, key of B-flat major. Measures 295-301. Measure 295 has a triplet of eighth notes (Bb, C, D) beamed together, followed by a half note E. Measures 296-301 contain various eighth and quarter notes, with a crescendo hairpin starting at measure 296.

302 *f* *mf*

Staff 302-307: Bass clef, key of B-flat major. Measures 302-307. Measure 302 has a triplet of eighth notes (Bb, C, D) beamed together, followed by a half note E. Measures 303-307 contain various eighth and quarter notes, with a crescendo hairpin starting at measure 303.

308 *f*

Staff 308-315: Bass clef, key of B-flat major. Measures 308-315. Measure 308 has a triplet of eighth notes (Bb, C, D) beamed together, followed by a half note E. Measures 309-315 contain various eighth and quarter notes, with a crescendo hairpin starting at measure 309.

316 *p*

Staff 316-323: Bass clef, key of B-flat major. Measures 316-323. Measure 316 has a triplet of eighth notes (Bb, C, D) beamed together, followed by a half note E. Measures 317-323 contain various eighth and quarter notes, with a crescendo hairpin starting at measure 317.

324 *f* *mf*

Staff 324-329: Bass clef, key of B-flat major. Measures 324-329. Measure 324 has a triplet of eighth notes (Bb, C, D) beamed together, followed by a half note E. Measures 325-329 contain various eighth and quarter notes, with a crescendo hairpin starting at measure 325.

330 *f*

Staff 330-338: Bass clef, key of B-flat major. Measures 330-338. Measure 330 has a triplet of eighth notes (Bb, C, D) beamed together, followed by a half note E. Measures 331-338 contain various eighth and quarter notes, with a crescendo hairpin starting at measure 331.

339 *p* *Cresc.* *fp*

Staff 339-345: Bass clef, key of B-flat major. Measures 339-345. Measure 339 has a triplet of eighth notes (Bb, C, D) beamed together, followed by a half note E. Measures 340-345 contain various eighth and quarter notes, with a crescendo hairpin starting at measure 340.

346

Staff 346-352: Bass clef, key of B-flat major. Measures 346-352. Measure 346 has a triplet of eighth notes (Bb, C, D) beamed together, followed by a half note E. Measures 347-352 contain various eighth and quarter notes, with a crescendo hairpin starting at measure 347.

353

360

360

360

366

366

The image shows a musical score for the bass line of 'The Rose Tree'. The key signature is two sharps (F# and C#), and the time signature is 3/4. The music is written on a single staff. It begins with a treble clef and a key signature of two sharps. The melody consists of eighth and quarter notes, with some slurs. There are two dynamic markings, *sf* (sforzando), indicating a strong accent on the notes. The first *sf* is under a group of notes, and the second *sf* is under a single note. The score ends with a double bar line.

372

[illegible]